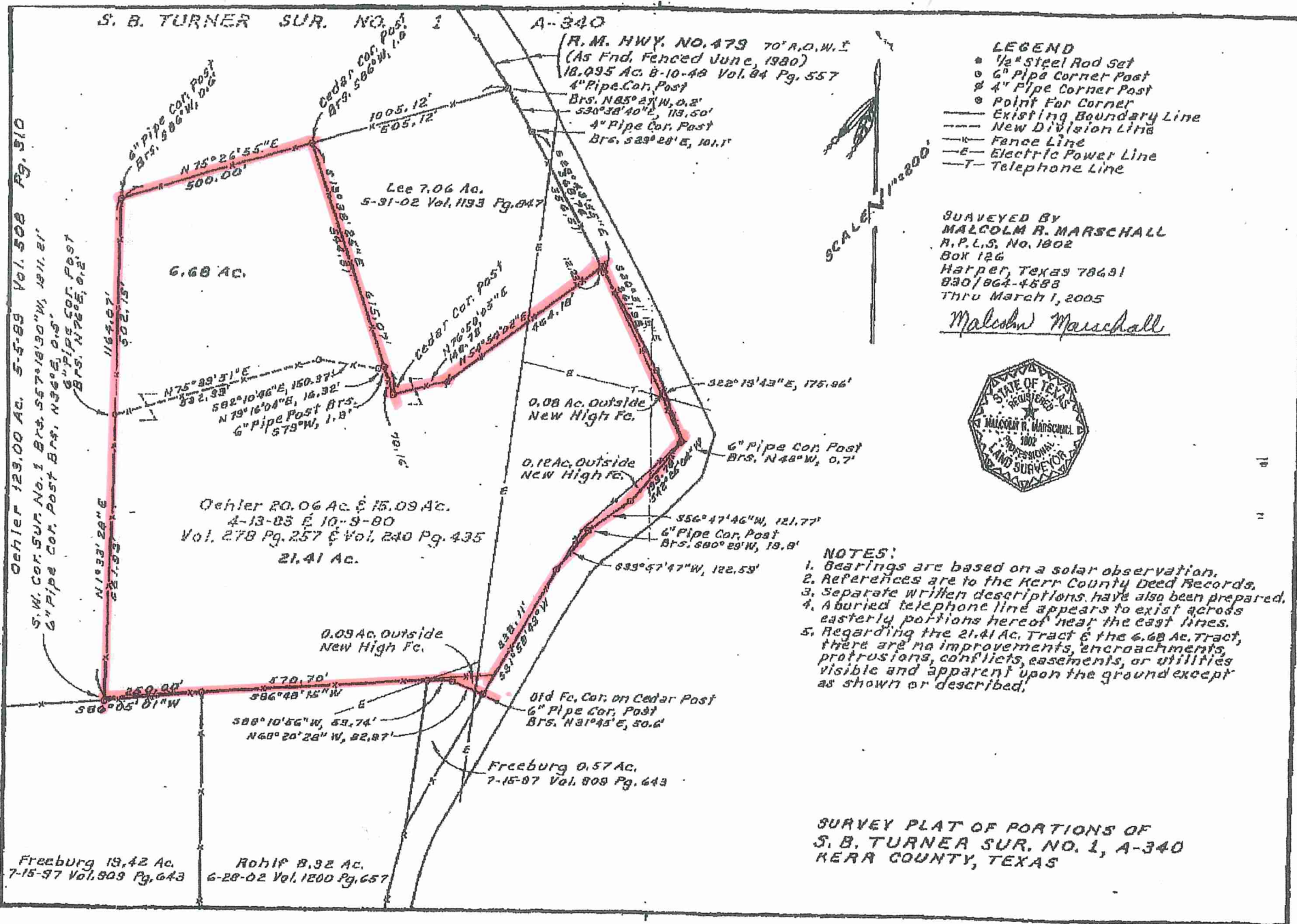


S. B. TURNER SUR. NO. 1 A-340

Oehler 123.00 Ac. 5-5-88 Vol. 508 Pg. 310
S.W. Cor. Sur. No. 1 Brs. S57°13'30"W, 1811.21'
6" Pipe Cor. Post Brs. N96°E, 0.8'



- LEGEND**
- 1/2" Steel Rod Set
 - 6" Pipe Corner Post
 - ⊙ 4" Pipe Corner Post
 - ⊙ Point For Corner
 - Existing Boundary Line
 - - - New Division Line
 - Fence Line
 - E- Electric Power Line
 - T- Telephone Line

SURVEYED BY
MALCOLM R. MARSHALL
 R.P.L.S. No. 1802
 Box 126
 Harper, Texas 78691
 830/864-4688
 Thru March 1, 2005
Malcolm Marshall



- NOTES:**
1. Bearings are based on a solar observation.
 2. References are to the Kerr County Deed Records.
 3. Separate written descriptions have also been prepared.
 4. A buried telephone line appears to exist across easterly portions hereof near the east lines.
 5. Regarding the 21.41 Ac. Tract & the 6.68 Ac. Tract, there are no improvements, encroachments, protrusions, conflicts, easements, or utilities visible and apparent upon the ground except as shown or described.

**SURVEY PLAT OF PORTIONS OF
 S. B. TURNER SUR. NO. 1, A-340
 KERR COUNTY, TEXAS**

08/10/2008 09:44 AM T 03U 007 107 000 1 03U 401 2800
 FULLY ASSESS
 8304